



KÖSTER Emergency Overflow 100*110*490 mm

Technical Data Sheet RT 918 011

Issued: 2021-07-28

Round emergency overflow PE based

Features

- Horizontal flat roof and emergency drainage through the Attica
- Straight flaps/flanges
- Flexible installation height
- Direct welding of the KÖSTER TPO / ECB Roofing and Waterproofing membrane onto the flaps/flanges
- Weatherproof
- Long-term stabilized
- Impact-resistant
- UV-resistant
- Excellent functionality through tested, norm-compliant discharge values
- DIN EN 12056 Part 3 - Roof drainage, layout and calculation
- DIN 1986 Part 100 - Drainage systems on private ground
- DIN EN 1253 - Gullies for buildings
- DIN 18531 - Waterproofing of roofs, balconies and walkways
- Flat roof directive

Technical Data

- Material: polyethylene
- Color: light gray
- Diameter: DN 100
- Dimensions of the flap/flange: 300 x 300 mm
- Pipe length: 480 mm
- Pipe inclination 5 °

Drainage performance

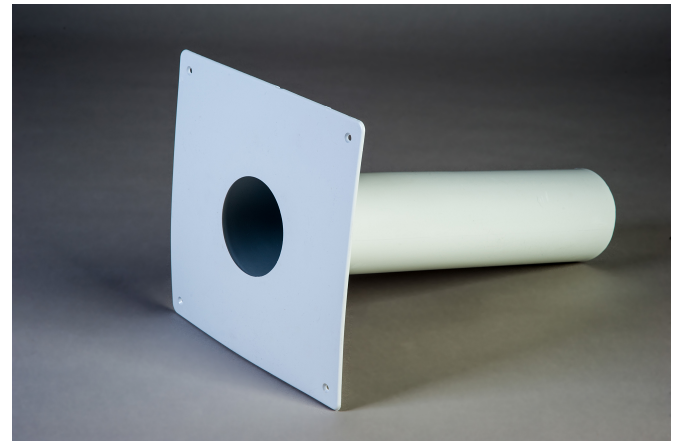
Retained water height	35 mm	75 mm
Drainage capacity l/s	approx. 1.5	approx. 3.0

Fields of Application

Horizontal flat roof and emergency drainage through the Attica

Application

The installation of the KÖSTER Emergency Overflow is carried out according to the KÖSTER installation instructions of the respective Technical Data Sheet, the KÖSTER TPO Installation Instructions and the Technical Manual KÖSTER Roofing Membranes from KÖSTER BAUCHEMIE AG.



Packaging

RT 918 011 piece

Related products

KÖSTER ECB 2.0	Prod. code RE 820
KÖSTER ECB 2.0 U	Prod. code RE 820 052 U
KÖSTER TPO 1.5	Prod. code RT 815
KÖSTER TPO 1.5 SK (FR)	Prod. code RT 815 SK (FR)
KÖSTER TPO 1.8	Prod. code RT 818
KÖSTER TPO 2.0	Prod. code RT 820
KÖSTER TPO 2.0 F	Prod. code RT 820 F
KÖSTER TPO 2.0 F (FR)	Prod. code RT 820 F (FR)
KÖSTER TPO 2.0 U	Prod. code RT 820 U

The information contained in this technical data sheet is based on the results of our research and on our practical experience in the field. All given test data are average values which have been obtained under defined conditions. The proper and thereby effective and successful application of our products is not subject to our control. The installer is responsible for the correct application under consideration of the specific conditions of the construction site and for the final results of the construction process. This may require adjustments to the recommendations given here for standard cases. Specifications made by our employees or representatives which exceed the specifications contained in this technical guideline require written confirmation. The valid standards for testing and installation, technical guidelines, and acknowledged rules of technology have to be adhered to at all times. The warranty can and is therefore only applied to the quality of our products within the scope of our terms and conditions, not however, for their effective and successful application. This guideline has been technically revised; all previous versions are invalid.